



DRAGON GOLD CUP

Dragon Gold Cup, Nations Cup, Borge Børresen Memorial Trophy, Dragon Gold Cup Corinthian Trophy and Silver Cup

9 – 14 June 2019

Medemblik, the Netherlands

www.dragongoldcup2019.com

SAILING INSTRUCTIONS

[DP] denotes that a penalty for a breach of that rule may, at the discretion of the protest committee, be less than disqualification (see the Introduction to the RRS).

ORGANIZING AUTHORITY

The Organizing Authority is the Royal Netherlands Yacht Club, the Royal Yacht Club Hollandia and the Dutch Dragon Association, in conjunction with the International Dragon Association and the Clyde Yacht Clubs' Association.

1. RULES

- 1.1 The regatta will be governed by the rules as defined in *The Racing Rules of Sailing* (RRS), the Dragon Gold Cup Rules, the Nations Cup Rules, the Borge Børresen Memorial Trophy Rules, the Dragon Gold Cup Corinthian Trophy Rules and the Silver Cup Rules.
- 1.2 No Class Rules will be changed under RRS 87.
- 1.3 In the event of a conflict between the Notice of Race and the Sailing Instructions, the Sailing Instructions shall prevail (this changes RRS 63.7).
- 1.4 The prescriptions of the Royal Netherlands Yachting Union will apply. See: http://www.sailing.org/documents/racingrules/national_prescriptions.php
- 1.5 If there is a conflict between languages the English text will take precedence.
- 1.6 RRS Appendix T Arbitration will apply.

2. NOTICES TO COMPETITORS

Notices to competitors will be posted on the official notice board located in front of the Race Office.

3. CHANGES TO SAILING INSTRUCTIONS

Any change to the sailing instructions will be posted at least two hours before the scheduled start on the day it will take effect, except that any change to the schedule of races will be posted by 20:00 hrs or before the end of the protest time limit on the day before it will take effect, whichever is earlier.

4 SIGNALS MADE ASHORE

- 4.1 Signals ashore will be displayed at the western flagpole of the Race Office.
- 4.2 When flag AP is displayed ashore, '1 minute' is replaced with 'not less than 90 minutes' in the race signal AP.
- 4.3 Flag D with one sound means 'The warning signal will be made not less than 90 minutes after flag D is displayed or not before the scheduled time, whichever is later. Boats shall not leave their berth until this signal is made. **[DP]**

5 SCHEDULE OF RACES

- 5.1 Event schedule on racing days:

Date	Time	Event
Saturday 8 June	14:00	Practice race
Sunday 9 June	10:00	Skippers briefing
	12:00	Race (warning signal)
	18:00	Opening ceremony
Monday 10 June	10:00	Skippers briefing
	12:00	Race (warning signal)
Tuesday 11 June	10:00	Skippers briefing
	12:00	Race (warning signal)
Wednesday 12 June	10:00	Skippers briefing
	12:00	Race (warning signal)
Thursday 13 June	10:00	Skippers briefing
	12:00	Race (warning signal)
Friday 14 June	09:00	Skippers briefing
	11:00	Race (warning signal)
	17:00	Prize giving ceremony

- 5.2 Six races are scheduled.
- 5.3 One extra race per day may be sailed if the race committee so decides and the decision is published in accordance with SI 3, except that no more than two races shall be sailed on any day. The warning signal for each succeeding race will be made as soon as practicable.
- 5.4 To alert boats that a race or sequence of races will begin soon, the orange starting line flag on the principal race committee vessel will be displayed with one sound for at least ten minutes before a warning signal is made.
- 5.5 On Friday 14 June 2019, except after a general recall no warning signal will be made after 14:30 hrs.

6 CLASS FLAG

The class flag will be Flag D (Delta).

7 COURSE AREA

Addendum 1 shows the location of the racing area.

8 THE COURSE

- 8.1 The course will be windward/leeward. The diagram in Addendum 2 shows the course, including the order in which marks are to be passed, and the side on which each mark is to be left.
- 8.2 Mark 1 will be approximately 2.5 nautical miles from the middle of the starting line. This distance may be adjusted depending on the prevailing conditions.
- 8.3 A race committee vessel with a tall mast flying a large flag or inflatable shape will be positioned to windward of mark 1. Failure to display a large flag or inflatable shape shall not be grounds for redress by a boat. This changes RRS 62.1(a).
- 8.4 No later than the warning signal, the principal race committee vessel at starboard end and the race committee vessel at port-end will display the approximate compass bearing from the middle of the starting line to mark 1. Failure to display shall not be grounds for redress by a boat. This changes RRS 62.1 (a).
- 8.5 Courses will not be shortened before the end of the leg to mark 1 for the second time. This changes RRS 32.

9 MARKS

- 9.1 Marks 1, 1a (offset mark), 2S and 2P will be black cylindrical buoys with white "Code-Zero" logo.
- 9.2 New marks, as provided in SI 12, will be yellow cylindrical buoys.
- 9.3 The starting marks will be race committee vessels.
- 9.4 The finishing marks will be a race committee vessel at the starboard end and a green cylindrical buoy at the port-end.
- 9.5 If only one gate mark is set, boats shall leave the single mark to port.
- 9.6 A race committee vessel signalling a change of course is a mark as provided in SI 12.2.

10 AREAS THAT ARE OBSTRUCTIONS

There are no areas that are obstructions.

11 THE START

- 11.1 Races will be started by using RRS 26 with the warning signal made five minutes before the starting signal.
- 11.2 The starting line will be between a staff displaying an orange flag on the principal race committee vessel at the starboard end and a staff displaying an orange flag on the race committee vessel at the port-end.

- 11.3 A dan buoy with green flag will be positioned on the starting line at a distance of 1/3rd of the starting line, measured from the starboard end starting mark. A dan buoy with red flag will be positioned on the starting line at a distance of 1/3rd of the starting line measured from the port-end starting mark. These dan buoys – which are for the convenience of competitors only - are not obstructions. The presence or the positioning of the aforementioned dan buoys shall not be grounds for redress. This changes RRS 62.1(a).
- 11.4 A boat that does not start within four minutes after her starting signal will be scored Did Not Start without a hearing. This changes RRS A4 an A5.
- 11.5 Boats recorded OCS, UFD or BFD may be notified at the windward mark by a race committee vessel displaying the penalized boats' sail numbers. A notified boat shall immediately leave the course. Failure to be notified shall not be grounds for redress. This changes RRS 62.1(a).

12 CHANGE OF THE NEXT LEG OF THE COURSE

- 12.1 To change the next leg of the course, the race committee will lay a new mark (or move the finishing line) and remove the original mark as soon as practicable. When in a subsequent change a new mark is replaced, it will be replaced by an original mark.
- 12.2 Except at a gate, boats shall pass between the race committee vessel signalling the change of the next leg and the nearby mark, leaving the mark to port and the race committee vessel to starboard. This changes RRS 28.1.

13 THE FINISH

- 13.1 The finishing line will be between a staff displaying an orange flag on the finishing mark at the starboard end and the course side of the port-end finishing mark.
- 13.2 When a second race is held on the same day the race committee will display Flag E (with no sound) at the finish of the first race of that day. The warning signal for the succeeding race will be made as soon as practicable.

14 PENALTY SYSTEM

- 14.1 RRS 44.1 is changed so that the Two-Turns Penalty is replaced by the One-Turn Penalty.
- 14.2 The penalty for a breach of a rule other than RRS 28, 31 and those in Part 2 may, after a hearing, vary between 10% of the number of boats entered in the series and disqualification.
- 14.3 If a jury member afloat witnesses an incident for which a boat is protesting another one, a blue flag will be displayed and a whistle sounded, which means "The jury is a witness". It is then up to the competitors to take the appropriate action.
- 14.4 Appendix P will apply. RRS P2.3 will not apply and RRS P2.2 is changed so that it will apply to any penalty after the first one.

15 TIME LIMITS

- 15.1 The time limit is five hours from the starting signal, except when there are two races scheduled on any day. The time limit for each race shall then be three hours.

- 15.2 If no boat has passed Mark 1 within 75 minutes of her starting signal the race will be abandoned.
- 15.3 Boats failing to finish within 60 minutes after the first boat sails the course and finishes, or when there are two races scheduled on any day within 30 minutes after the first boat sails the course and finishes, will be scored Did Not Finish without a hearing. This changes RRS 35, A4 and A5.

16 PROTESTS, AND REQUESTS FOR REDRESS

- 16.1 Protest forms are available at the Race Office. Protests and requests for redress shall be delivered there within the appropriate time limit.
- 16.2 The protest time limit is 90 minutes after the last boat has finished the last race of the day or the race committee signals no more racing today, whichever is later. This time will be posted on the official notice board. The same protest time limit applies to all protests by the race committee, technical committee and the protest committee and to requests for redress. This changes RRS 61.3 and 62.2. The protest committee shall extend the time limit if there is good reason to do so (RRS 61.3, last sentence).
- 16.3 Notices will be posted within 20 minutes of the protest time limit to inform competitors of hearings in which they are parties or named as witnesses. Hearings will be held in the Jury room located in the vicinity of the Race Office.
- 16.4 Notices of protest by the race committee, technical committee or protest committee will be posted to inform boats under RRS 61.1(b).
- 16.5 A list of boats that, under SI 14.4, have been penalized for breaking RRS 42 will be posted.
- 16.6 Breaches of SIs marked **[DP]** will not be grounds for a protest by a boat. This changes RRS 60.1(a).
- 16.7 Hearings and/or arbitrations may be conducted before the end of the protest time limit if all parties agree.
- 16.8 Decisions of the international jury will be final as provided in RRS 70.5.

17 SCORING

- 17.1 Four races are required to be completed to constitute a series.
- 17.2 No races shall be discarded.
- 17.3 For the application of Appendix A, the number of boats entered in the series shall be the number of entries confirmed at registration.
- 17.4 RRS A4.2 is amended as follows:

A boat that did not start, did not finish, retired after finishing, or was disqualified for UFD and/or BFD shall be scored points to the finishing place one more than the number of boats confirmed at registration. Disqualification for any other reason shall be scored additional points equal to 10% of the number of boats confirmed at registration, fractions being raised to the next highest whole number.
- 17.5 RRS A8 is amended as follows:

In the event of a tie on total points between two or more boats, the tie shall be broken in favour of the boat or boats with the most first places and, when the tie remains, the most second places and so on until all ties are broken. If the tie still

remains it shall stand as part of the final result and each of the joint winners shall hold the Gold Cup for an equal time until the next Gold Cup.

- 17.6 If fewer than four races have been sailed the Dragon Gold Cup and the Nations Cup will not be awarded.

18 REPORTING AT COMMITTEE VESSEL AND SAFETY REGULATIONS [DP]

- 18.1 Before the starting procedure in the first race of the day, boats shall, while sailing on starboard tack, pass behind the principal race committee vessel and make sure they have been acknowledged. Boats failing to report may be scored Did Not Start without a hearing. This changes RRS 35, A4 and A5.
- 18.2 A boat that retires from racing or intends not to start shall notify the race committee as soon as possible.

19 REPLACEMENT OF CREW OR EQUIPMENT [DP]

- 19.1 Substitution of competitors will not be allowed without prior written approval of the protest committee and shall comply with any restrictions in the Notice of Race.
- 19.2 Substitution of damaged or lost equipment will not be allowed unless authorized by the technical committee. Requests for substitution shall be made in writing at the first reasonable opportunity and can be subject to a measurement inspection control.

20 EQUIPMENT AND MEASUREMENT CHECKS [DP]

- 20.1 A boat or equipment may be inspected at any time for compliance with the class rules and sailing instructions.
- 20.2 On the water, a boat can be instructed by a member of the technical committee to proceed immediately to a designated area for inspection.

21 EVENT ADVERTISING [DP]

Boats shall display event sponsor advertising on request. The Organizing Authority will supply the advertising and instructions for their use.

22 OFFICIAL BOATS

- 22.1 Official boats will be marked as follows:

Technical committee	Flag with M or 'Measurer'
Protest committee	Flag with 'Jury'
Media	Flag with 'Press'
Race committee	Flag with 'RC'
Rescue	Flag with 'Rescue'

- 22.2 Actions by official boats or drones will not be grounds for requesting redress by a boat. This changes RRS 60.1(b).

22.3 Race committee vessels may be in position near each mark. Failure of a race committee vessel to be in position or to display its identification flag will not be grounds for redress. This changes RRS 62.1(a).

23 SUPPORT BOATS [DP]

The support boats regulations of Addendum 3 shall apply to all support boats.

24 TRASH DISPOSAL

Trash may be placed aboard support or official boats.

25 HAUL-OUT RESTRICTIONS [DP]

All boats shall be afloat 90 minutes before the scheduled start of the first racing day (Sunday 9 June) and shall not be hauled out during the regatta except with, and according to, the terms of prior written permission of the protest committee.

26 DIVING EQUIPMENT AND PLASTIC POOLS [DP]

Underwater breathing apparatus, including snorkels, plastic pools or their equivalent shall not be used below the waterline between 90 minutes before the scheduled start of the first racing day (Sunday 9 June) and the end of the regatta.

27 RADIO COMMUNICATION [DP]

27.1 Except in an emergency, a boat that is racing shall not make voice or data transmissions and shall not receive voice or data communication that is not available to all boats.

27.2 A boat may use a VHF radio in accordance with class rule 11.11.1.

27.3 The race committee will broadcast information available to all competitors by using VHF radio on channel 72. Failure to make these broadcasts or failure to hear them shall not constitute grounds for redress. This changes RRS 62.1(a).

28 TROPHIES AND PRIZES

28.1 The Dragon Gold Cup, the Nations Cup, the Borge Børresen Memorial Trophy, The Dragon Gold Cup Corinthian Trophy and the Silver Cup will be awarded as stated in the Notice of Race.

28.2 The following prizes will be awarded as well:

- Overall prizes for the 1st, 2nd, 3rd, 4th, and 5th crew.
- Prizes for the 1st, 2nd, 3rd, 4th and 5th Corinthians.
- Daily prizes.

28.3 The time of the daily prize giving will be posted on the official notice board within 120 minutes of the finish of the last boat in the last race of that day.

29 DISCLAIMER OF LIABILITY

Competitors participate in the regatta entirely at their own risk. See RRS 4, Decision to

Race. The Organizing Authority will not accept any liability for material damage or personal injury or death sustained in conjunction with or prior to, during, or after the regatta.

30 INSURANCE

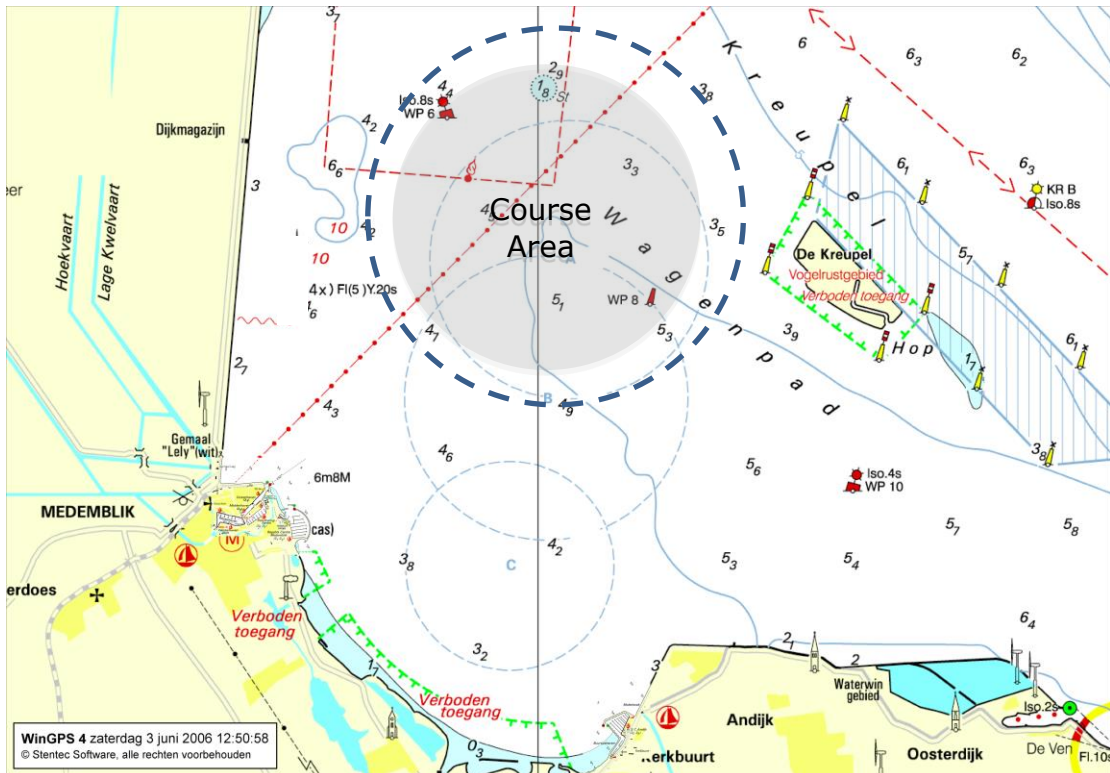
Each participating boat shall be insured with valid third party liability insurance with a minimum cover of EURO 1.500.000 per incident or the equivalent.

ADDENDUM 1 - COURSE AREA

APPROXIMATE POSITION COURSE AREA

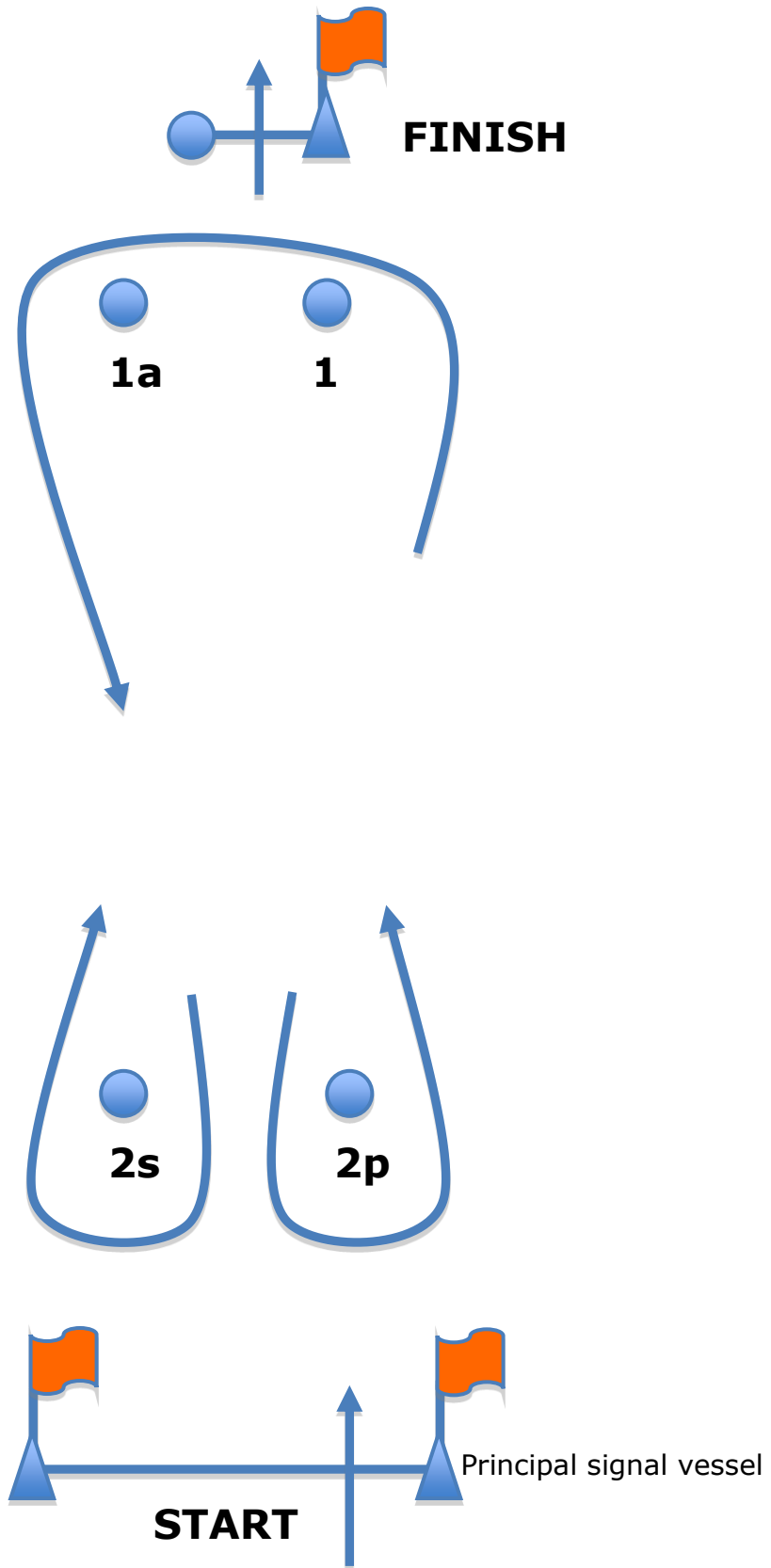
Harbour – Racing Area (midpoint) distance: approx. 2,5 NM

Compass bearing: approximately: 035 - 045.



See also: Hydrografische kaart 1810: IJsselmeer
ISB Number: 8717073814626

ADDENDUM 2 - COURSE ILLUSTRATION



COURSE: WINDWARD/ LEEWARD WITH OFFSET MARK

MARK ROUNDING ORDER: START-1-1a-2s/2p-1-1a-2s/2p-FINISH





ADDENDUM 3 - SUPPORT BOAT REGULATIONS

1 General

- 1.1 These Support Boat Regulations (SBR) shall apply from 0900 on 9 June to 1800 on 14 June 2019.
- 1.2 For the purposes of these regulations, a support boat includes any boat that is under the control or direction of a support person as defined in the RRS.
- 1.3 The Organizing Authority may inspect boats at any time to ensure that they comply with these regulations, and the person responsible for the boat shall facilitate such inspection.
- 1.4 An alleged breach of any of these regulations may be referred to the protest committee for a hearing. As a result of the hearing, the Protest Committee may instruct the Organizing Authority to withdraw accreditation and access rights from the offending party, with or without the option of substitution, either for a specified period or for the remainder of the competition. Note also, action may be taken under RRS 69.
- 1.5 The Organizing Authority may change these regulations at any time. Any changes will be posted on the official notice board and circulated to team leaders.
- 1.6 The Organizing Authority may, at its discretion, refuse to register support boats not deemed to be suitable. Generally, open boats more than 4.0m and less than 7.5m in length and having minimal or no superstructure (cabin, support house, bridge, etc.) are considered suitable.
- 1.7 Support boats and designated drivers shall be registered at the Race Office either before leaving the venue by water for the first time or by 1800 on the day before the first race of the event that it is supporting, whichever is earlier.
 - 1.7.1 Each boat shall be insured with valid third-party liability insurance with a minimum coverage of EURO 1,500,000 (or equivalent) per incident.
 - 1.7.2 Only an accredited support person may be a designated driver.
 - 1.7.3 The person registering the support boat shall sign to confirm that:
 - he / she holds a valid insurance certificate showing proof of third-party liability coverage as required by 1.7.1;
 - the designated driver has a motorboat driving license recognized by a national authority appropriate to that boat; and
 - anyone who will be using a radio has an appropriate radio operation license recognized by a national authority.
- 1.8 Support boats shall be marked as follows:

The three-letter WS Member National Authority code shall be clearly displayed on both sides of the boat in strongly contrasting colors at all times while afloat. The minimum height for the letters shall be 200 mm. The letters will not be provided by the Organizing Authority.

- 1.9 Support boats shall not pass any information by any means whatsoever to competitors which are racing (RRS 41).
- 1.10 Communication by radio (including mobile phones) is prohibited between competitors and any support boats. Support boats shall not communicate with or transfer goods or equipment to or from, their competing boats from the time of the preparatory signal until all boats have finished or the race committee signals a postponement, general recall or abandonment.
- 1.11 Support boats must be on call on marine VHF Channel 13 at all times while afloat.

2 Sailing Venue

- 2.1 Support boats shall use the designated slipway/area for launching. Once launched, trailers shall be moved immediately to the trailer park or as otherwise directed by the Organizing Authority.
- 2.2 Only support boats that will be registered will be allowed into the sailing venue.
- 2.3 When not in use, support boats shall be appropriately berthed at the sailing venue in the allocated areas for support boats for the entire time that these SBR apply.
- 2.4 Support boats shall not use the keelboat pontoons for any purpose whatsoever, including mooring, launching and retrieval, and loading and unloading of equipment.

3 Safety

- 3.1 Support boats shall carry on board:
 - life jackets / buoyancy aid for all passengers and the driver (it is recommended that they are worn at all times when afloat);
 - first-aid kit;
 - VHF radio;
 - device for making a sound signal;
 - compass;
 - adequate anchor and tackle for conditions and depth;
 - tow rope (minimum 15m long and 10mm thick);
 - operational engine kill cord (also known as a safety lanyard or automatic engine immobilizer);
 - knife
- 3.2 It is strongly recommended that the kill cord is used at all times when the engine is running.
- 3.3 Support boats shall never exceed maximum plated / certified passenger limits.
- 3.4 Team leaders or the registered drivers are responsible for overseeing the safety of their support boats on the water, including knowledge of who is afloat and ensuring their safe return to the venue.
- 3.5 At all times, the registered driver(s) of a support boat shall comply with directions given by a race official. In particular, this includes assisting in rescue operations when requested to do so.
- 3.6 Support boats shall comply with local harbor and marina regulations, in particular speed limits

4 General restrictions

- 4.1 The registered driver(s) of a support boat will be responsible for the control of the boat at all times and will be held responsible for any inappropriate behavior, dangerous actions or improper practices, or actions affecting the fairness or safety of competition.
- 4.2 Support boats shall not leave any device, piece of equipment, buoy, marker or similar item permanently in the water.
- 4.3 Support boats should take particular care to minimize their wash when transiting the course areas.

5 Support Boat Zone

- 5.1 Support Boats shall not be positioned:
 - i. Closer than 100 meters of any boat racing
 - ii. Within 100 meters of the starting line and marks from the time of the preparatory signal until all boats have left the starting area, or the race committee signals a postponement, general recall or abandonment.
 - iii. Between any boat racing and the next mark of the course.
 - iv. Within 100 meters of any mark of the course while boats are in the vicinity of that mark.
 - v. Within 100 meters of the finishing line and marks while boats are finishing.
- 5.2 In addition, support boats that are motoring above 5 knots shall remain at least 150 meters from any boat racing.